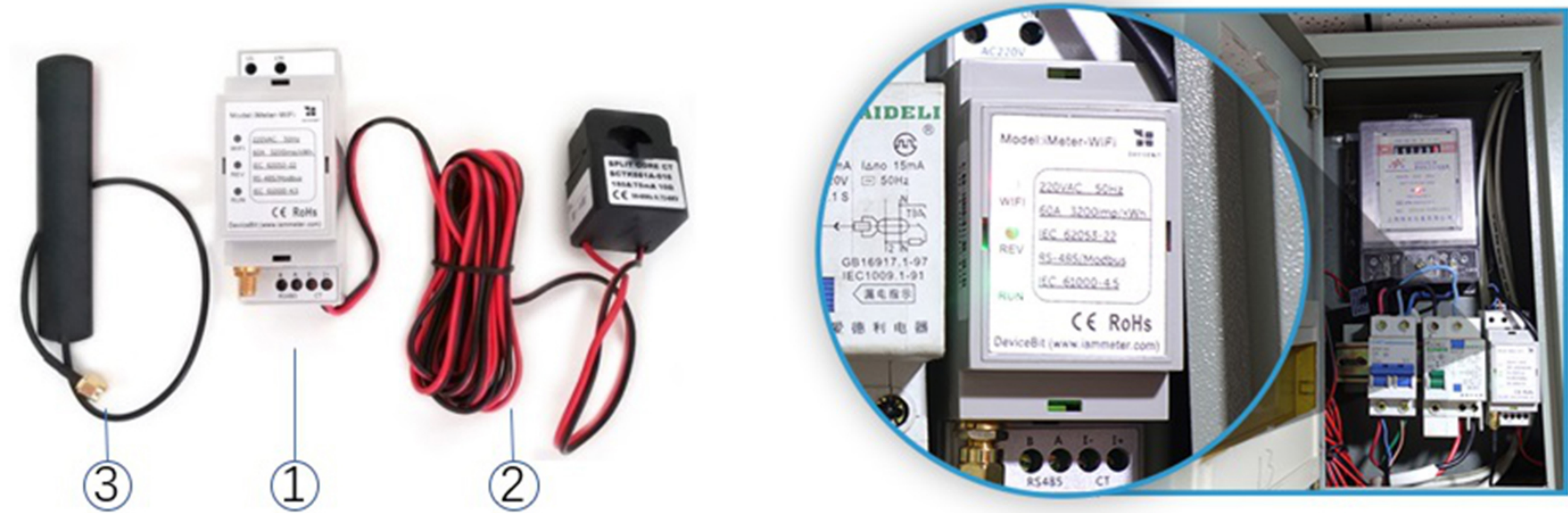


# QuickStart Single Phase Wi-Fi Electricity Meter (WEM3080)

## 1. Hardware Introduction

Hardware Appearance

After iMeter Installed

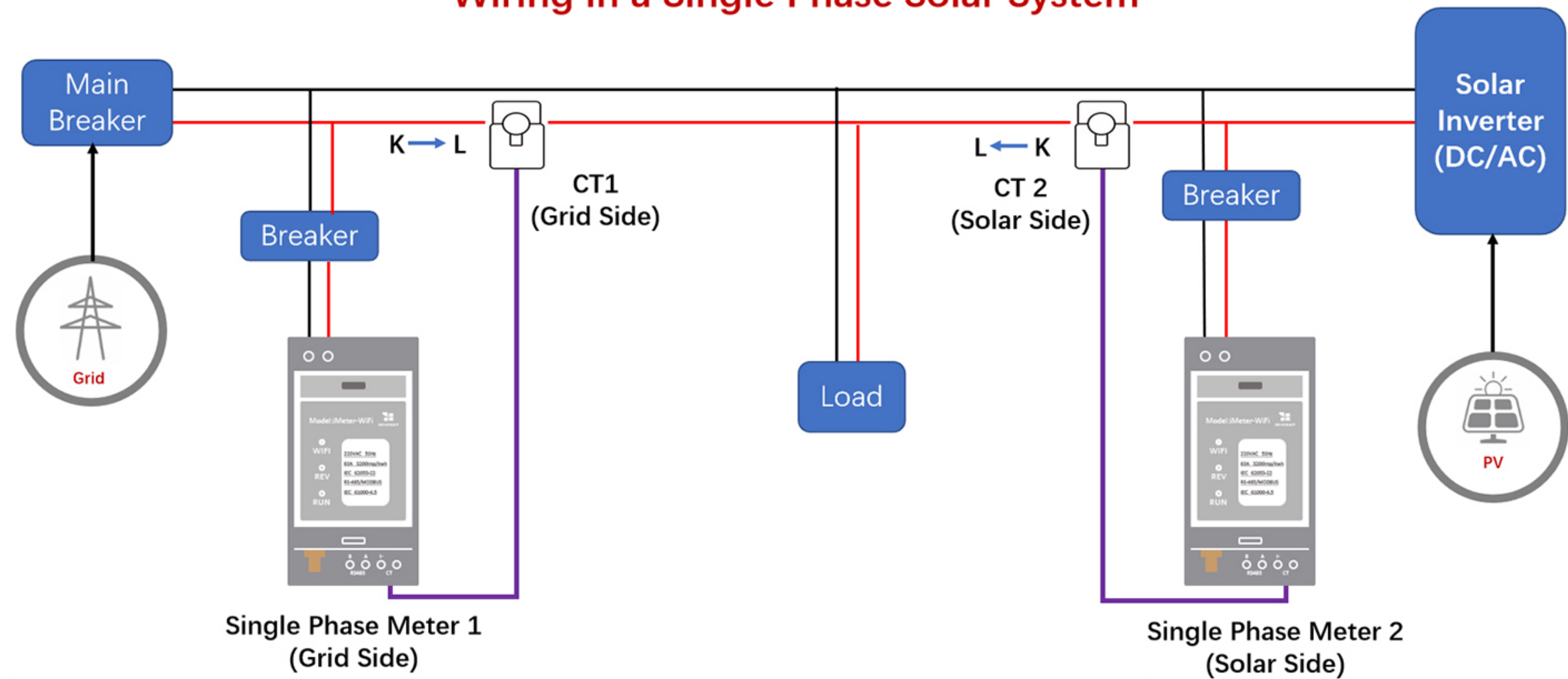


### Standard Inclusion:

No.	Item	Qty	Remark
1	Wi-Fi Energy Meter	1	Wi-Fi module embedded
2	Split-Core CT (Current Transformer)	1	100A by default, other CT ratings are optional
3	2.4G Antenna	1	

## 2. Typical Wiring Diagram

### Wiring in a Single Phase Solar System

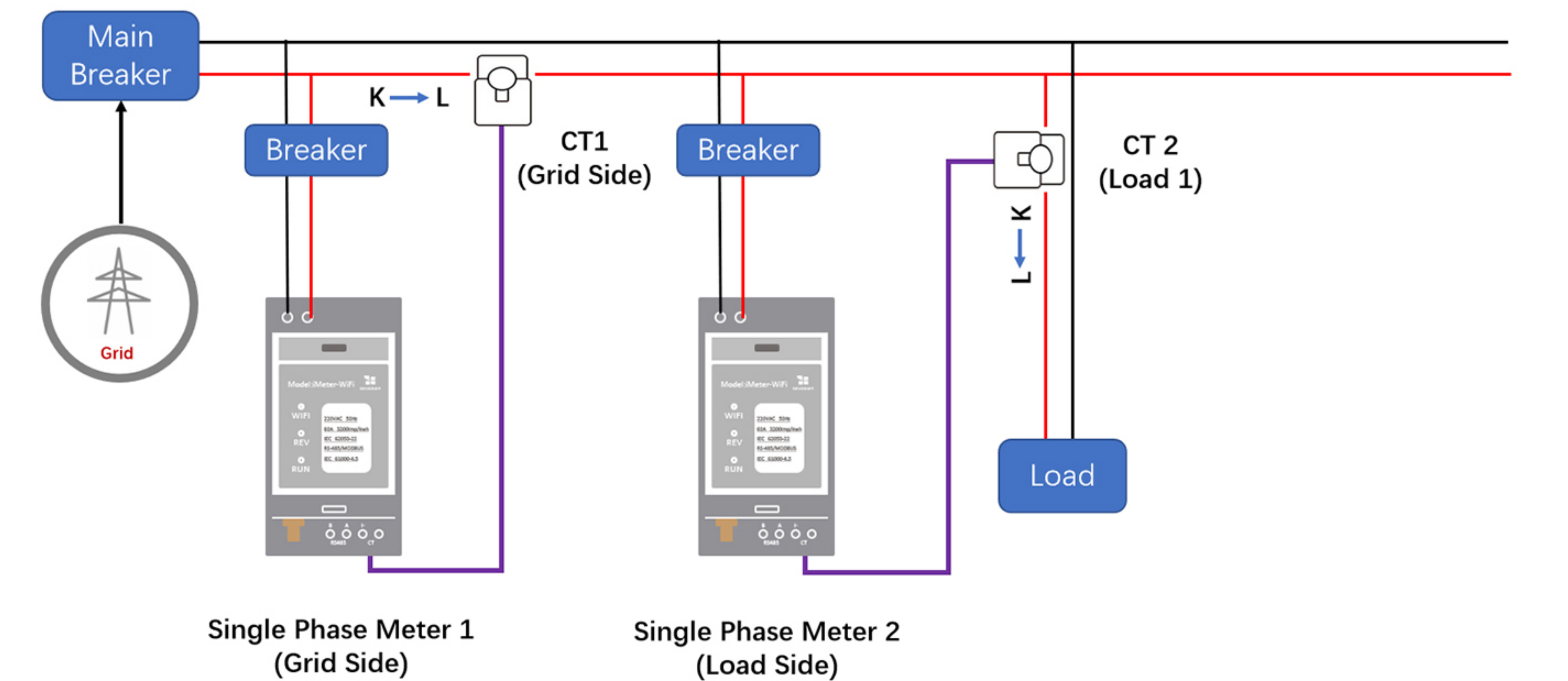


Clip CT1 onto Grid: Measure “From Grid” or “To Grid” energy.  
If the measured current direction is K→L, the energy reading is accumulated as “From Grid” Energy;  
If the measured current direction is L→K, the energy reading is accumulated as “To Grid” Energy.  
Clip CT2 onto Inverter: Measure how much energy generated by inverter

— Neutral Line  
— Live Line



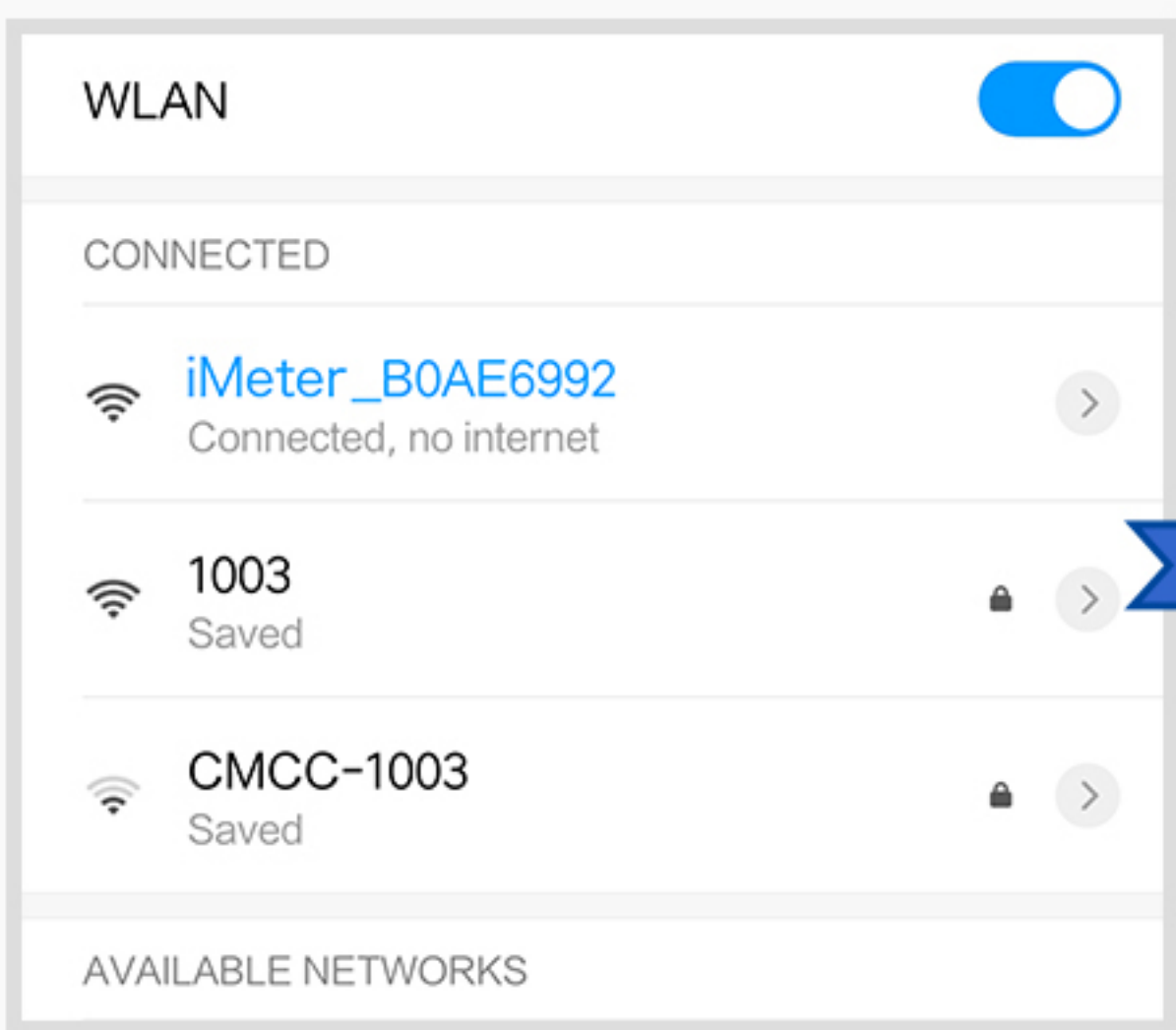
Wiring in a Single Phase Residential Electricity System



Clip CT1 onto Grid: Measure "From Grid" energy.  
Clip CT2 onto Load: Measure how much energy consumed by load

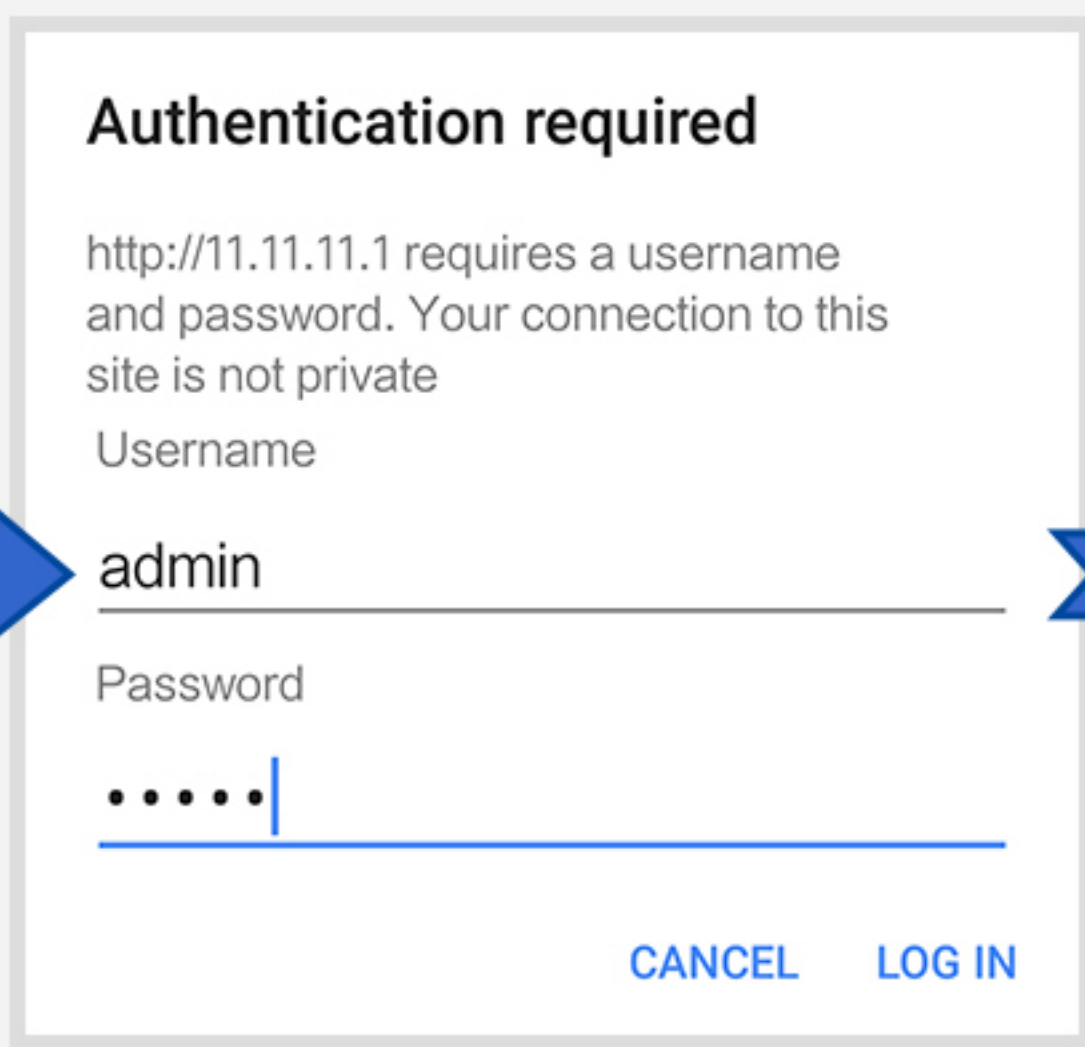
Neutral Line  
Live Line

3. Wi-Fi Setup



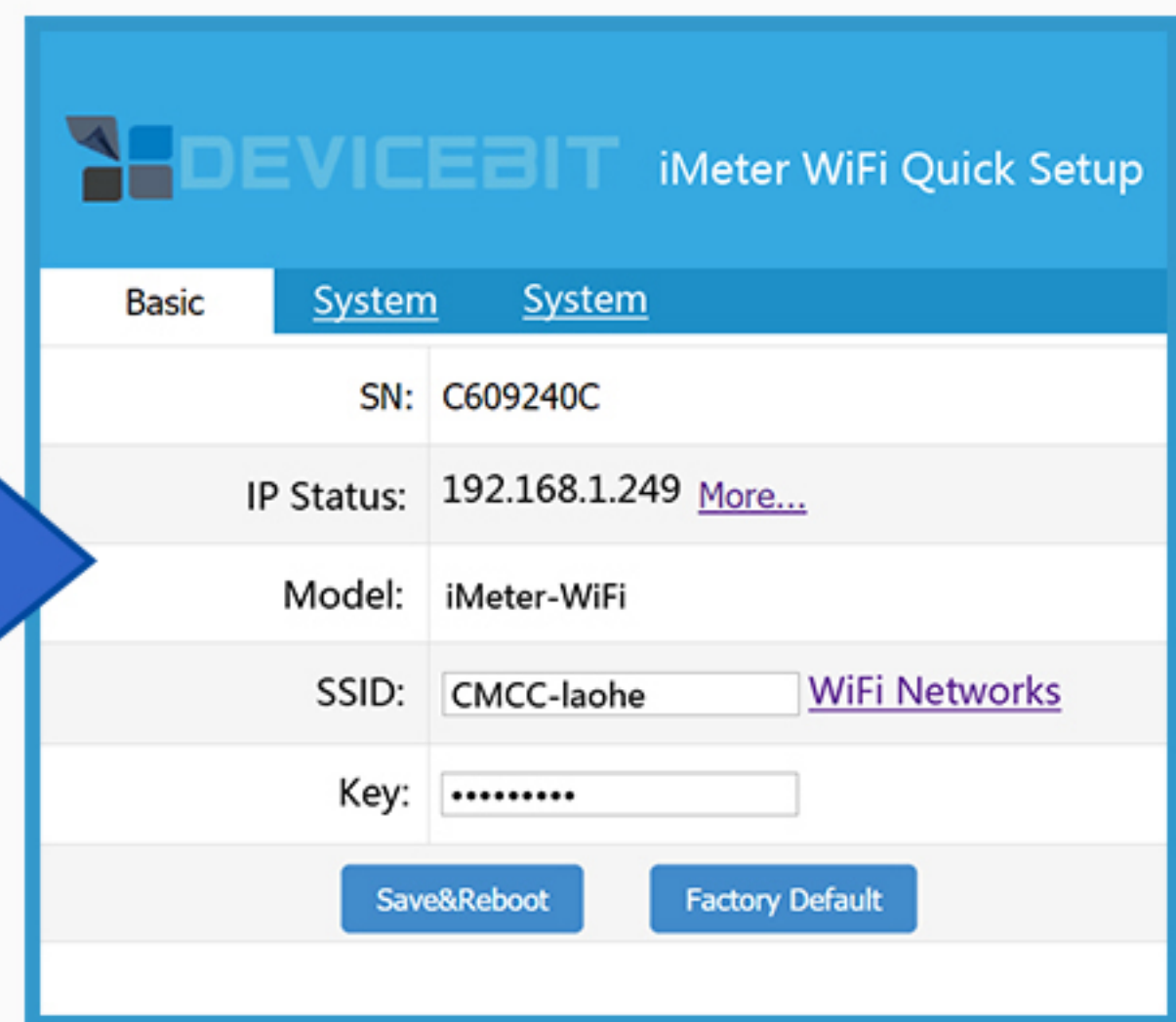
1 Step1

- Use your smart device's WiFi connection setup, connect to the iMeter's network ( show up as iMeter\_xxxxxxx)
- xxxxxxxx is a unique SN of iMeter
- No password required



2 Step2

- Whilst connected to the iMeter's network, open a web browser and navigate to <http://11.11.11.1/>
- Enter the username "admin" and password "admin" and log into the configuration webpage.

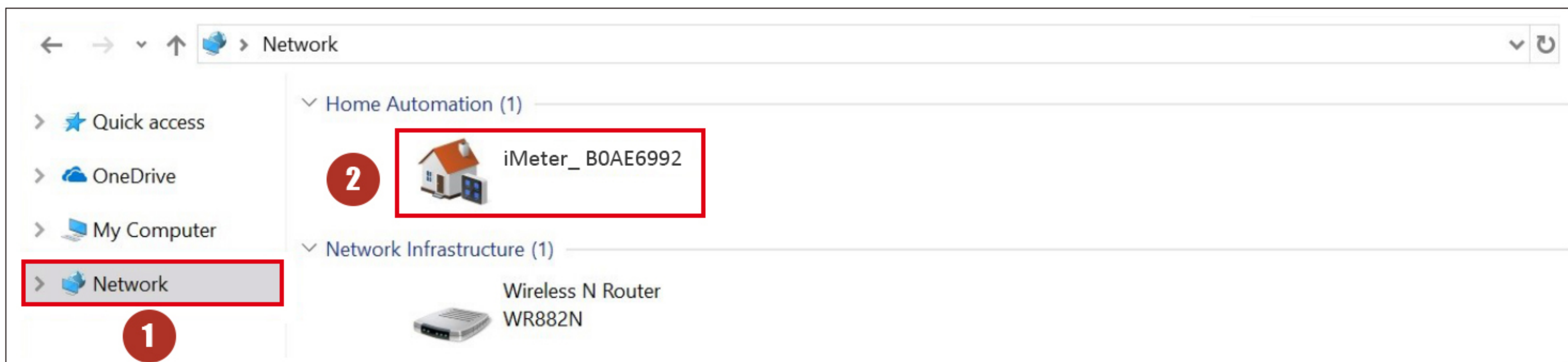


3 Step3

- Click "Wi-Fi Networks" to search and select your home Wi-Fi Network as SSID
- Enter the password for your home Wi-Fi Network as Key.
- Click "Save&Reboot"

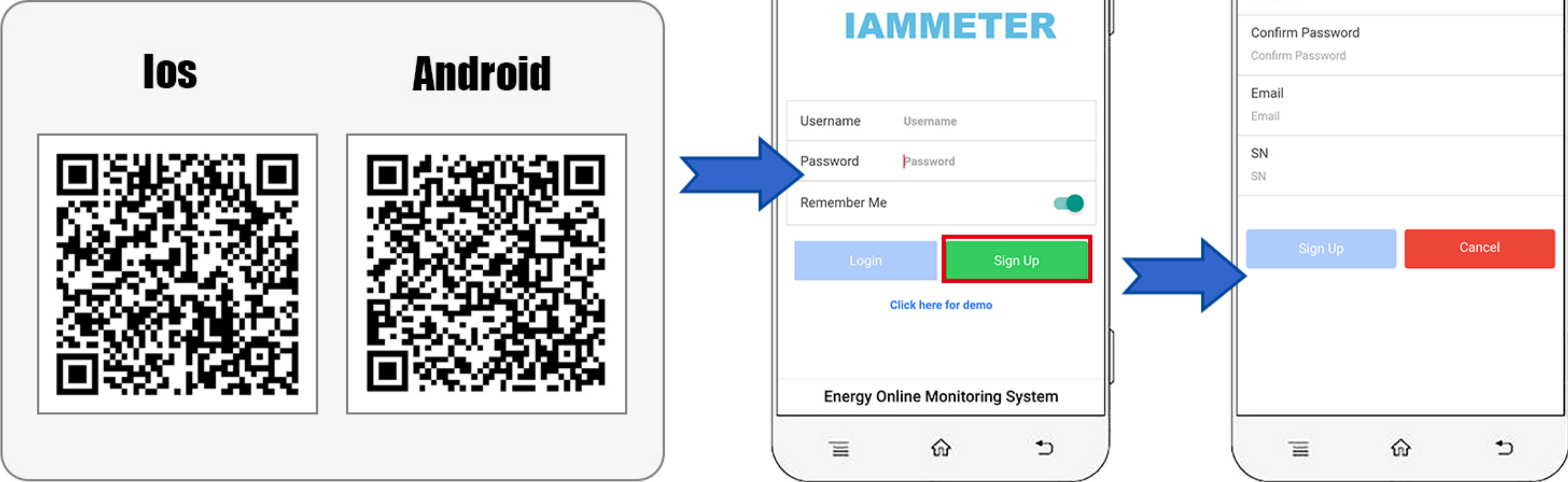
Tips

- ① After connected to the your home Wi-Fi network, the iMeter's Wi-Fi access point signal (iMeter\_xxxxxxx) will be hidden for security reason;
- ② You can find your iMeter in the network of your PC which is connected to the same home Wi-Fi network.





## 4. Sign up by mobile App



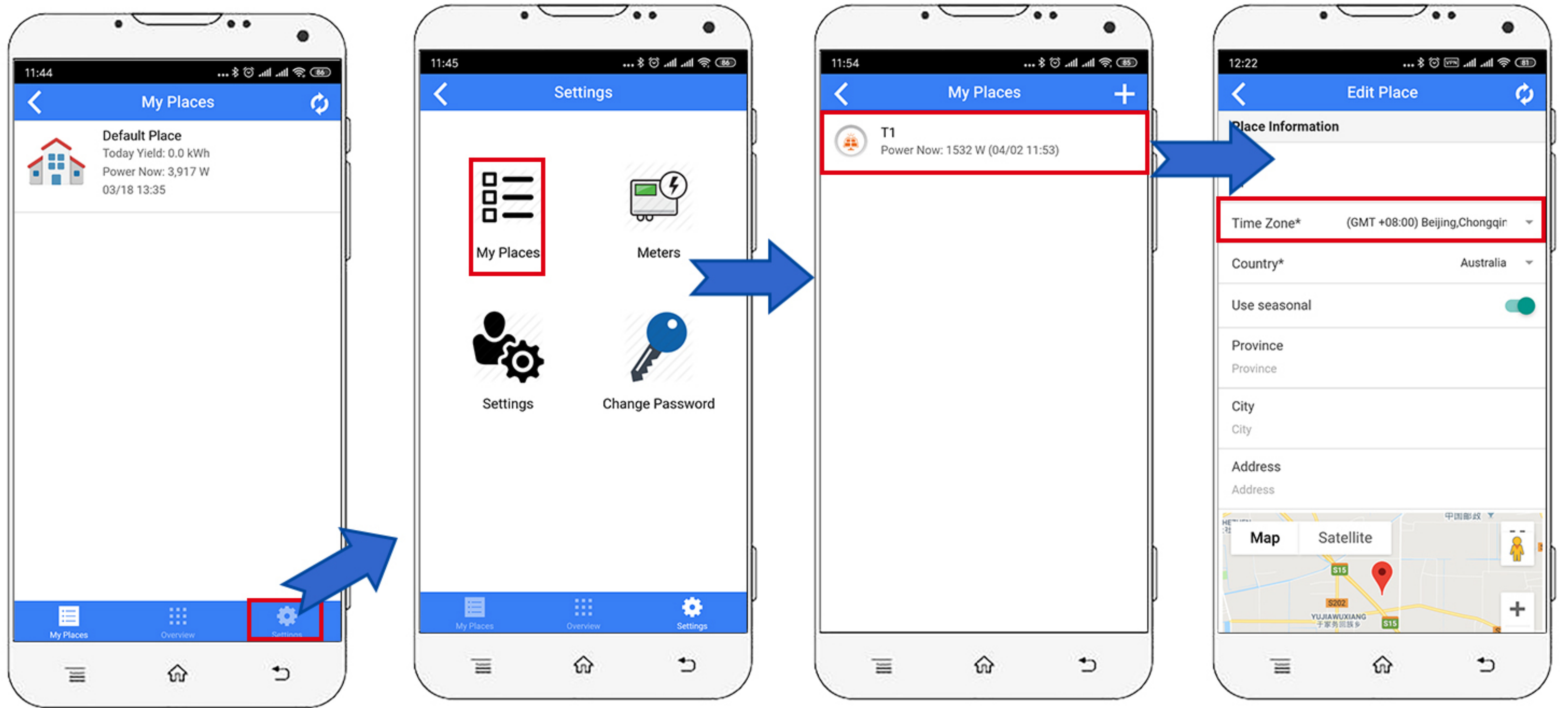
**1 Download mobile app**

**2 Click "Sign Up" to fill in the information.**

### Tips

SN: The serial number of your iMeter. You can copy it from the iMeter's access point signal (iMeter\_XXXXXXX, XXXXXX is the SN).

## 5. Set the time zone

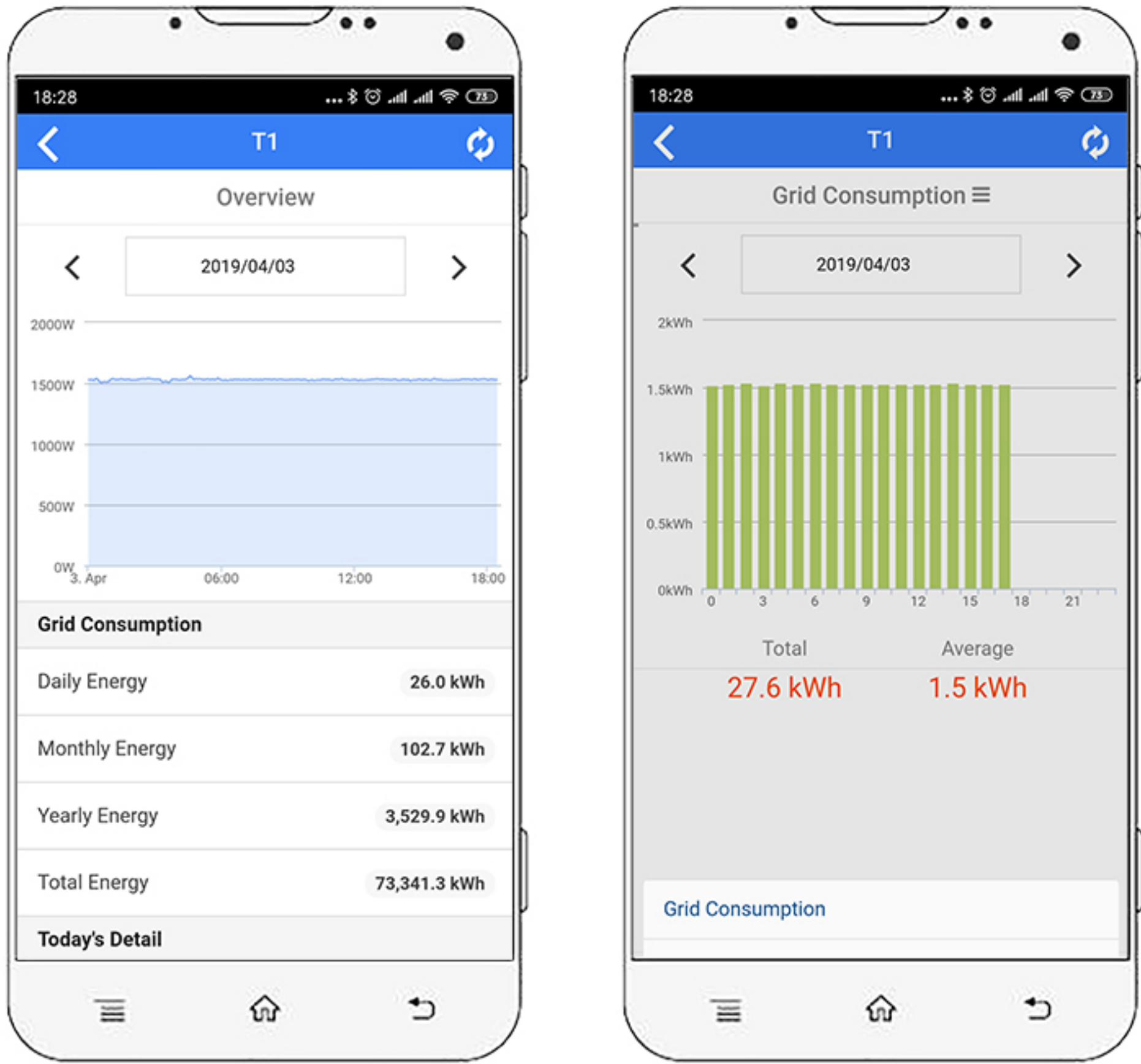


### Tips

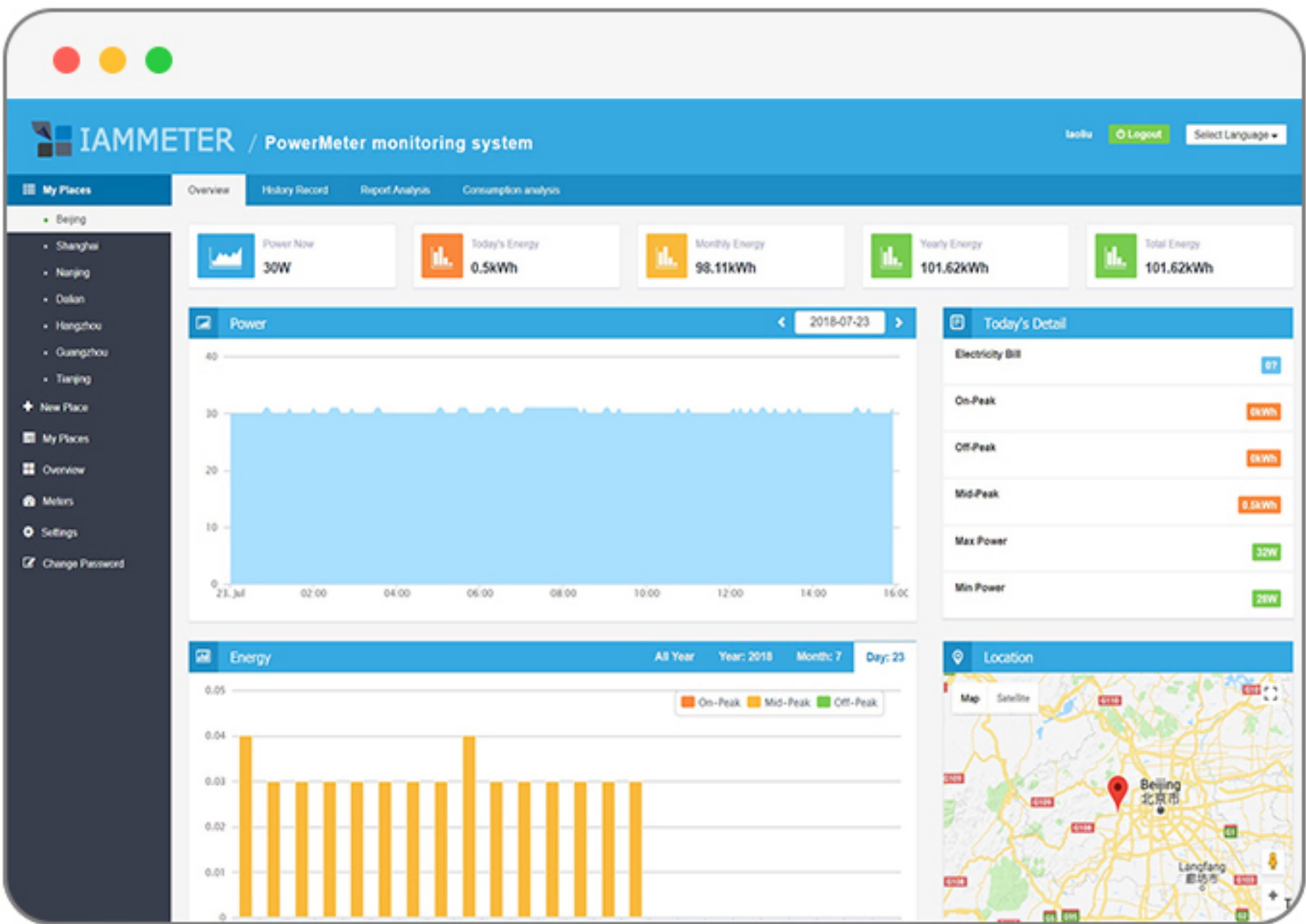
Time zone must be set according to your location for correct data display and report on time basis.



# 6.View the Data



1 Data view on app



2 Data view on web portal

## Tips

Please visit <https://www.iammeter.com> to log into the web portal. Same username and password as app.