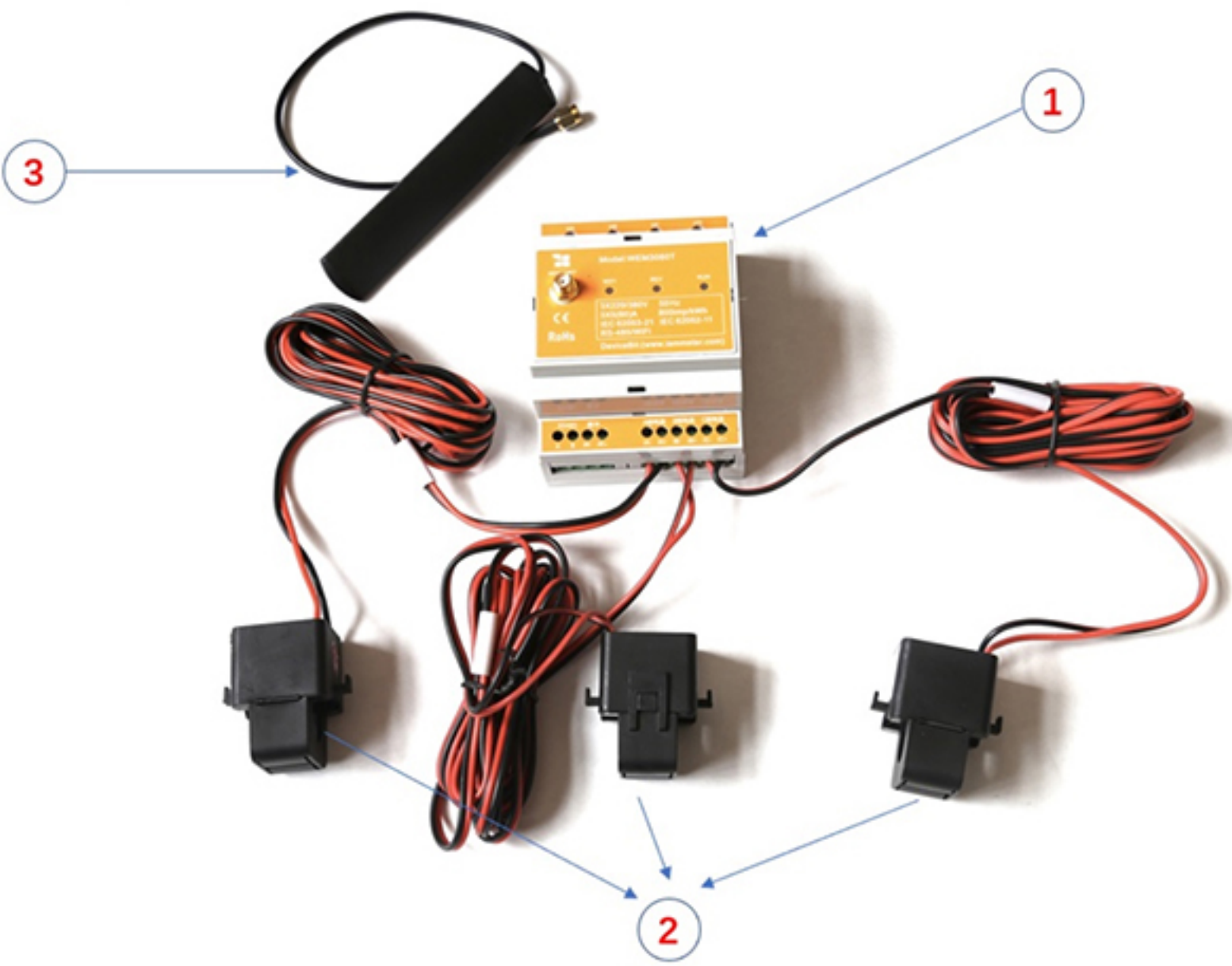


QuickStart Three Phase Wi-Fi Electricity Meter (WEM3080T)

1. Hardware Introduction

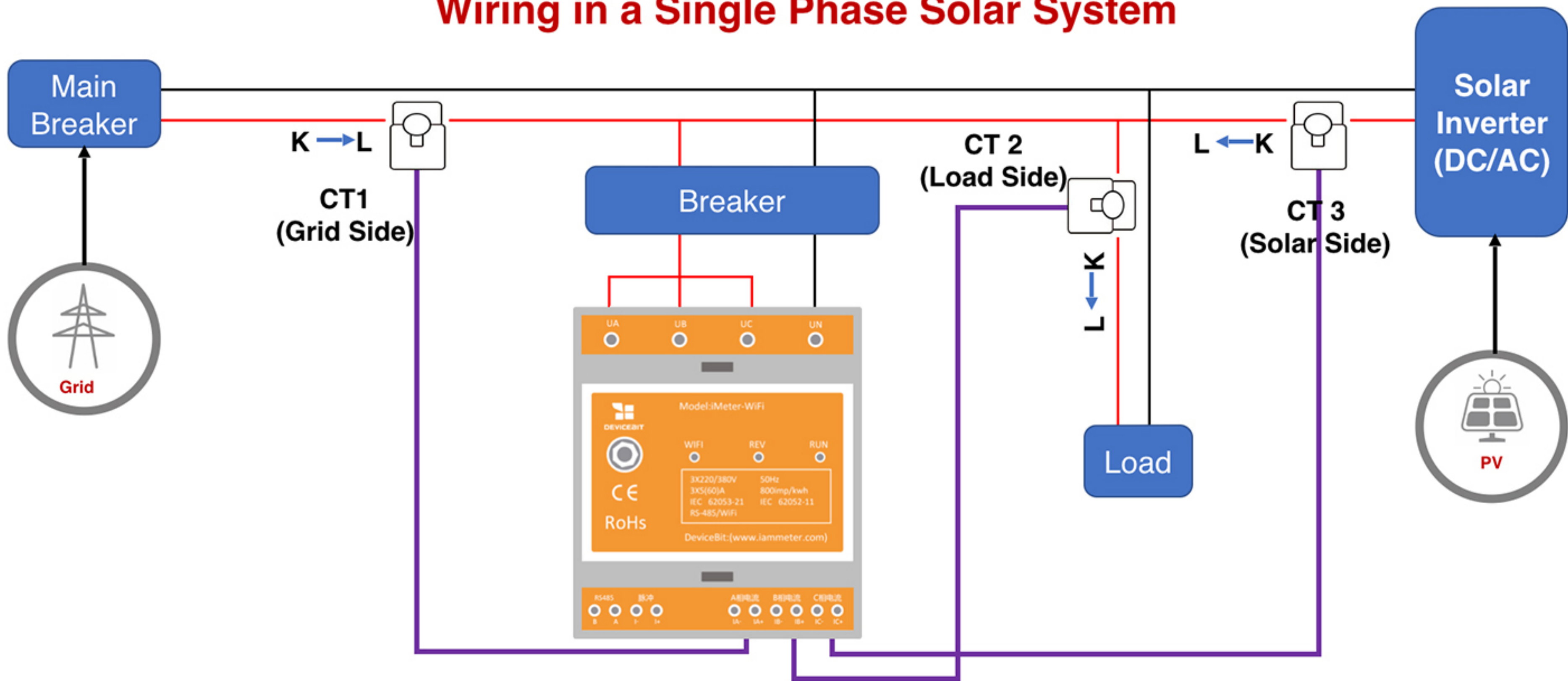


Standard Inclusion:

No.	Item	Qty	Remark
1	Wi-Fi Energy Meter	1	Wi-Fi module embedded
2	Split-Core CT (Current Transformer)	1	100A by default, other CT ratings are optional
3	2.4G Antenna	1	

2. Typical Wiring Diagram

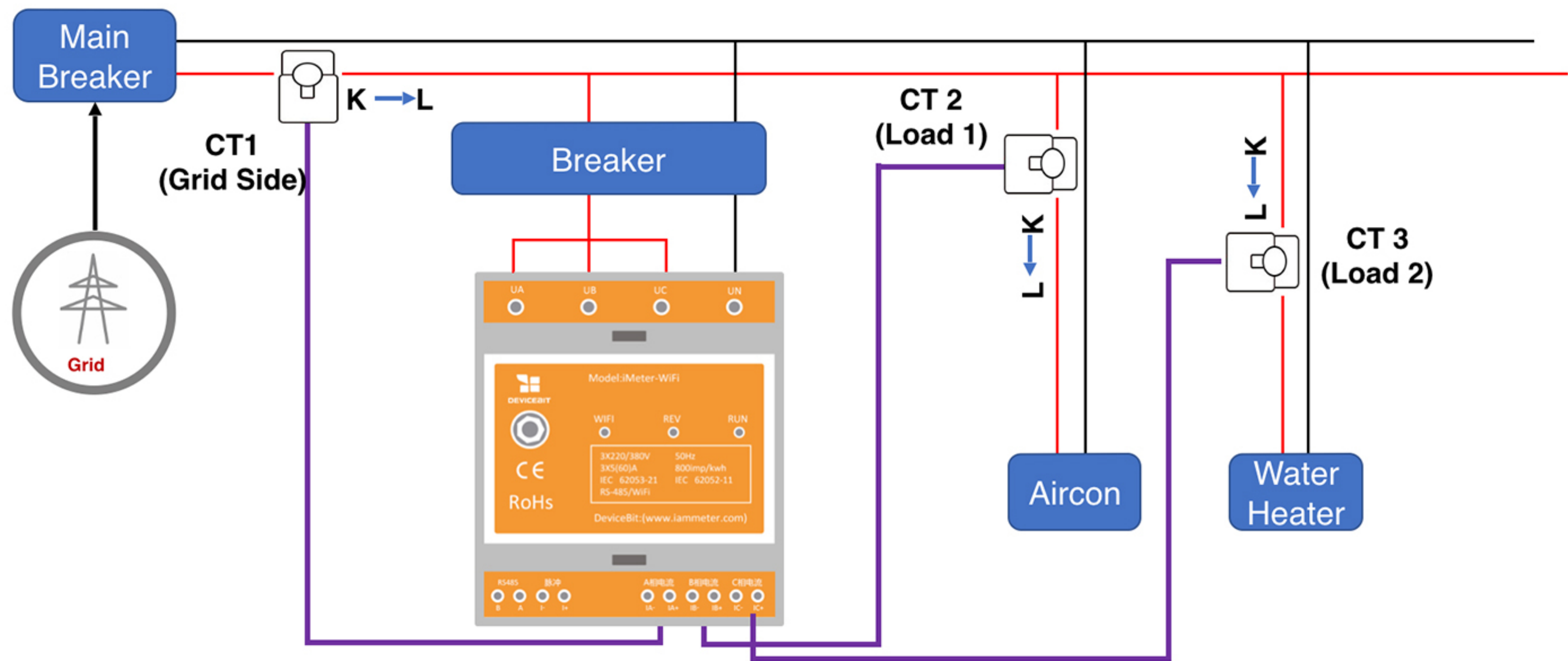
Wiring in a Single Phase Solar System



Clip CT1 onto Grid: Measure “From Grid” or “To Grid” energy.
If the measured current direction is K→L, the energy reading is accumulated as “From Grid” Energy;
If the measured current direction is L→K, the energy reading is accumulated as “To Grid” Energy.
Clip CT2 onto Load: Measure how much energy consumed by load
Clip CT3 onto Inverter: Measure how much energy generated by inverter

Neutral Line ———
Live Line ———

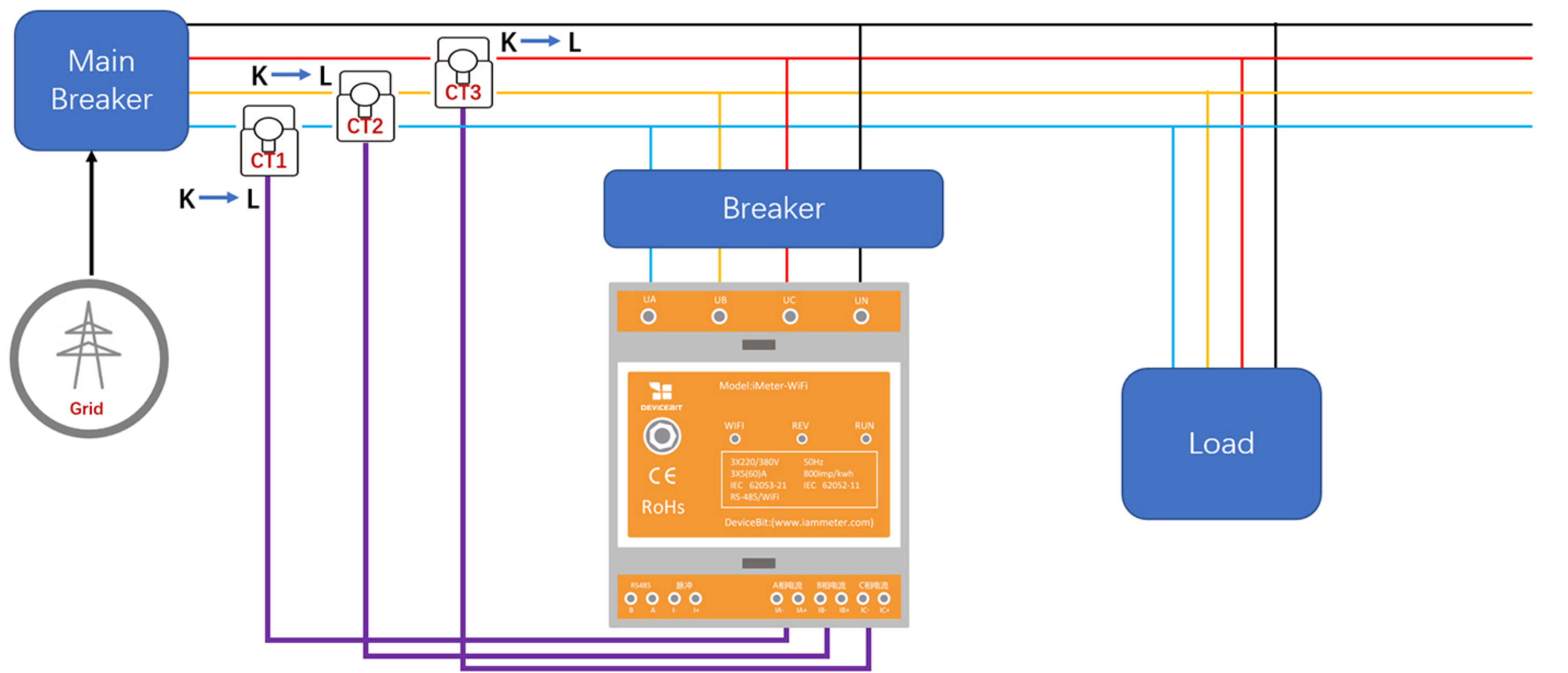
Wiring in a Single Phase Residential Electricity System



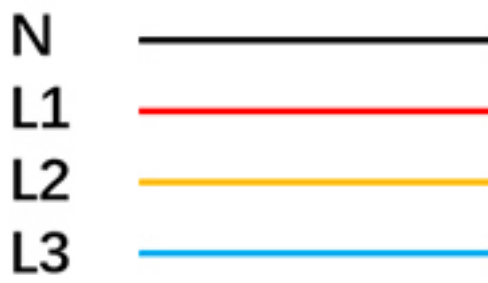
Clip CT1 onto Grid: Measure “From Grid” energy.
Clip CT2 onto Load1: Measure how much energy consumed by load1
Clip CT3 onto Load2: Measure how much energy consumed by load2

Neutral Line ———
Live Line ———

Wiring in a Three Phase Residential Electricity System



Clip CT1, CT2, CT3 onto grid Phase A, Phase B and Phase C or you can clip them onto any three live lines that sharing a same neutral line in the electric circuit. Like you can measure Phase A, B, C or Phase A x 3 or Phase Ax1+Phase Bx2, etc. in an electric circuit where there is only one neutral line.

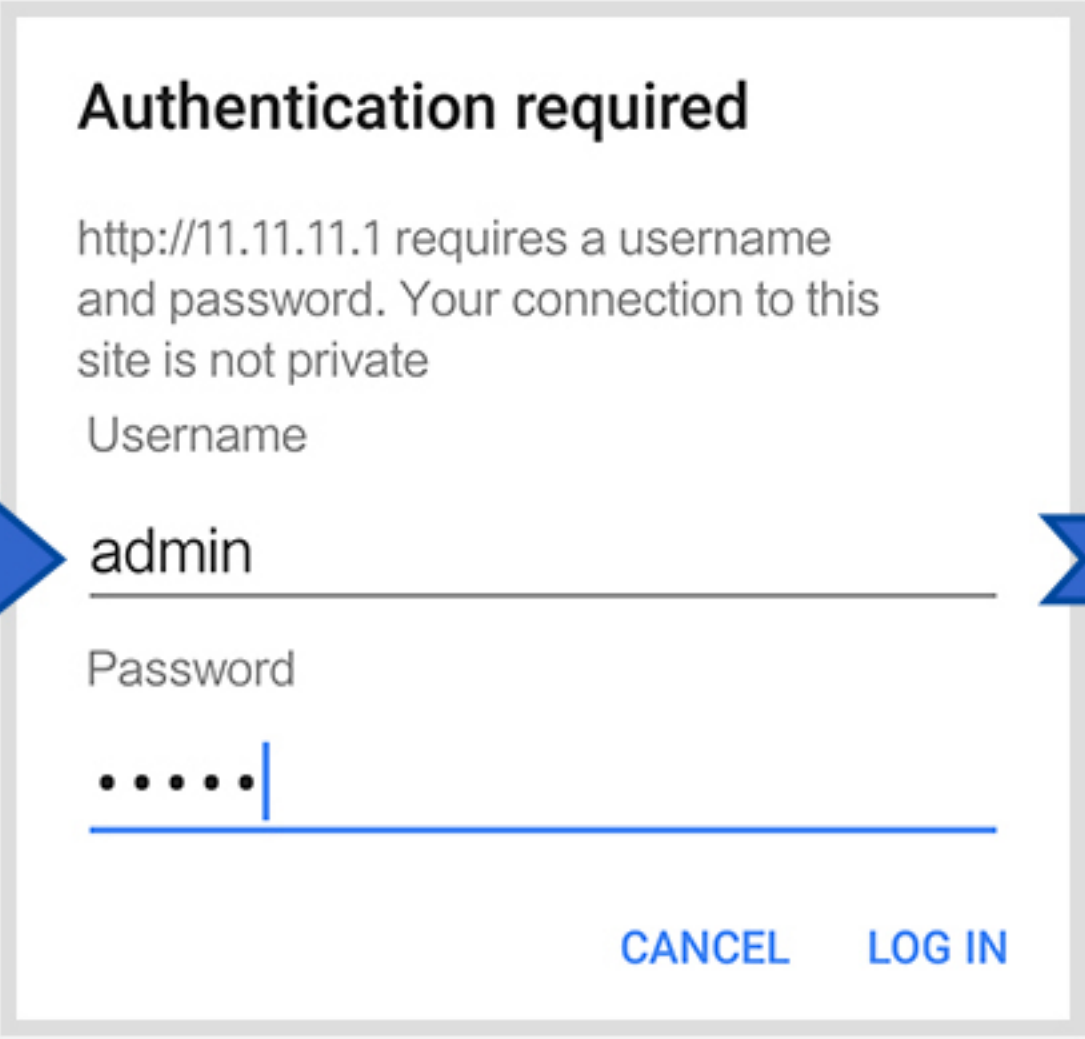


3. Wi-Fi Setup



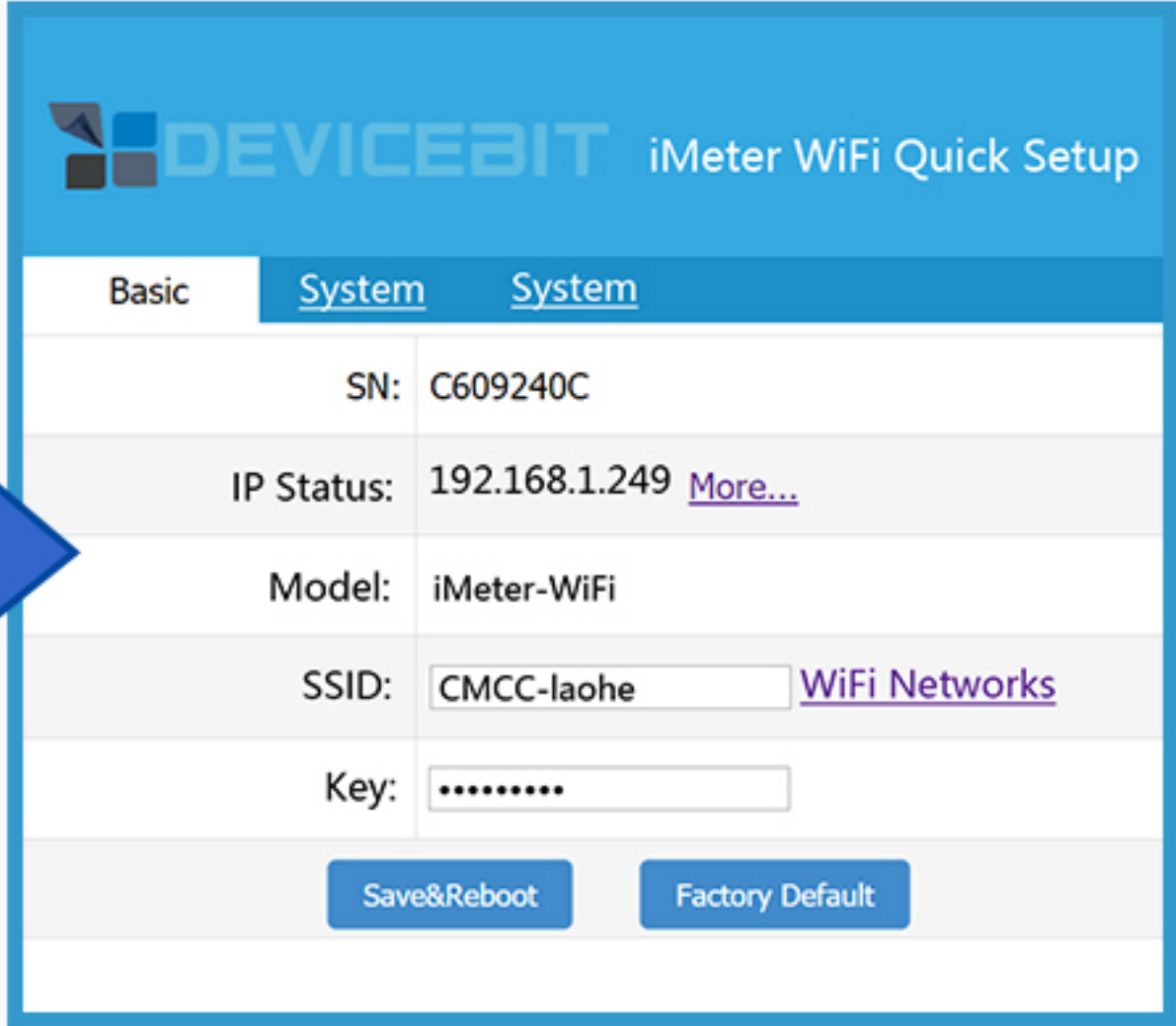
1 Step1

- Use your smart device’s WiFi connection setup, connect to the iMeter’s network (show up as iMeter_xxxxxxx)
- xxxxxxxx is a unique SN of iMeter
- No password required



2 Step2

- Whilst connected to the iMeter’s network, open a web browser and navigate to <http://11.11.11.1/>
- Enter the username “admin” and password “admin” and log into the configuration webpage.

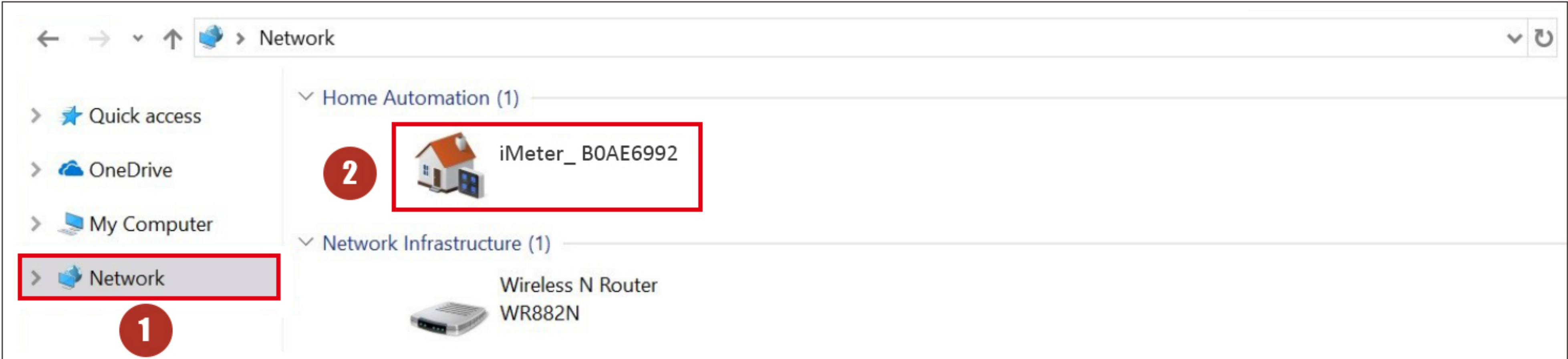


3 Step3

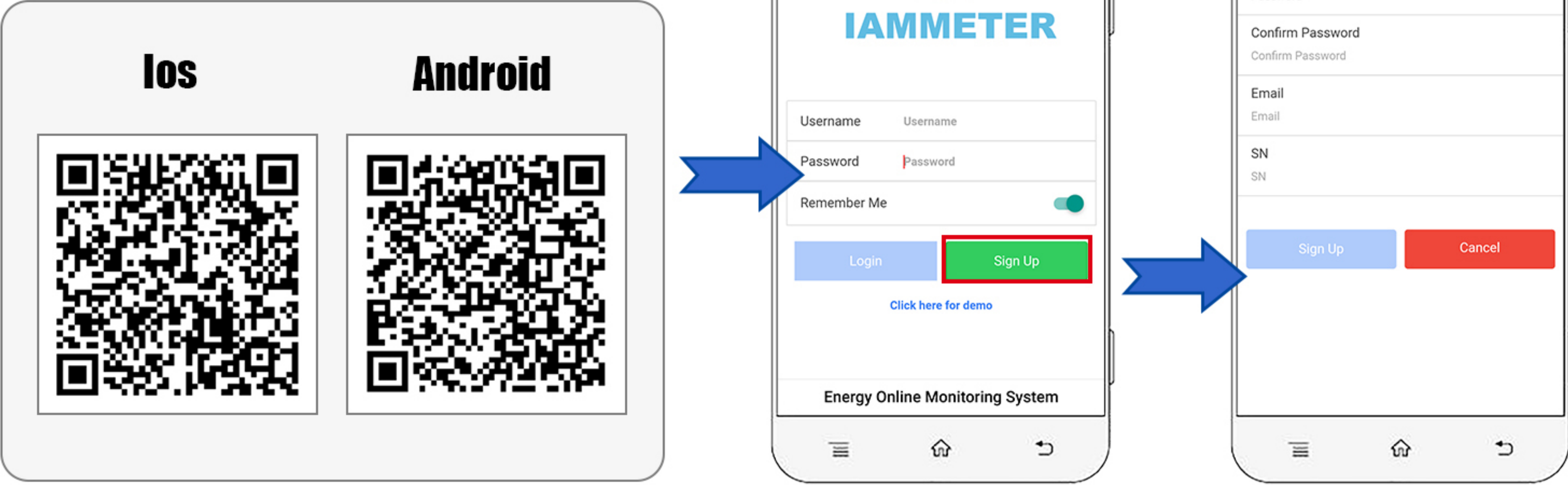
- Click “Wi-Fi Networks” to search and select your home Wi-Fi Network as SSID
- Enter the password for your home Wi-Fi Network as Key.
- Click “Save&Reboot”

Tips

- ① After connected to the your home Wi-Fi network, the iMeter’s Wi-Fi access point signal (iMeter_xxxxxxx) will be hidden for security reason;
- ② You can find your iMeter in the network of your PC which is connected to the same home Wi-Fi network.



4. Sign up by mobile App



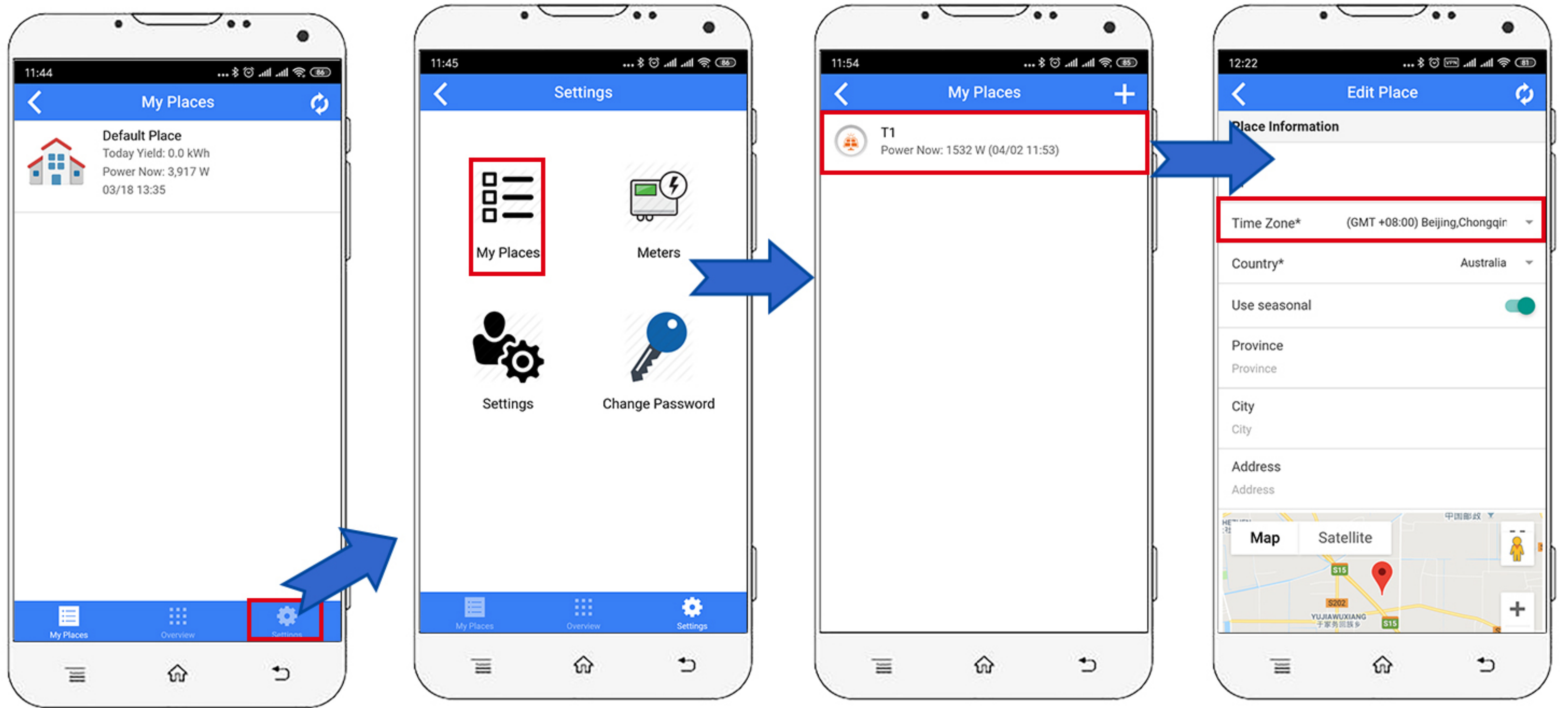
1 Download mobile app

2 Click "Sign Up" to fill in the information.

Tips

SN: The serial number of your iMeter. You can copy it from the iMeter's access point signal (iMeter_XXXXXXX, XXXXXX is the SN).

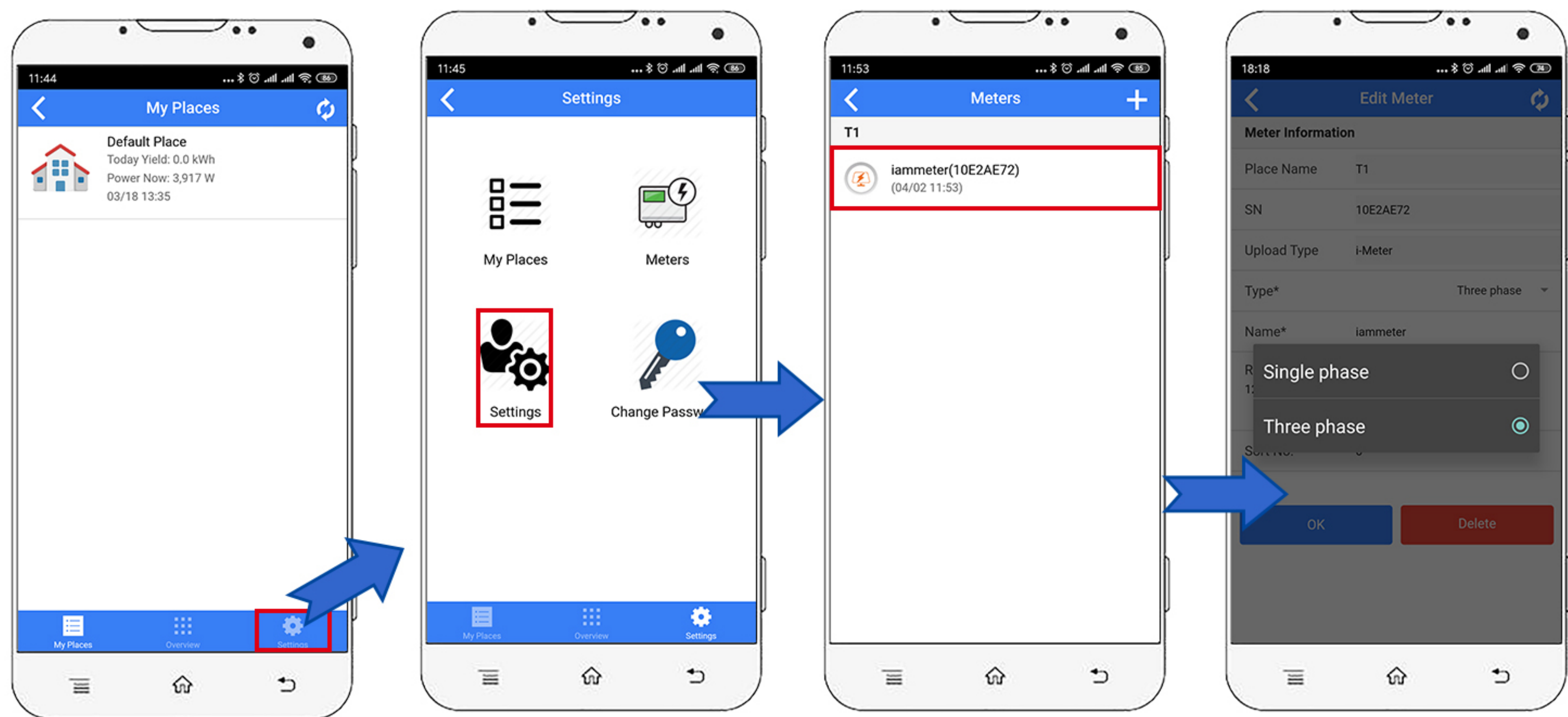
5. Set the time zone



Tips

Time zone must be set according to your location for correct data display and report on time basis.

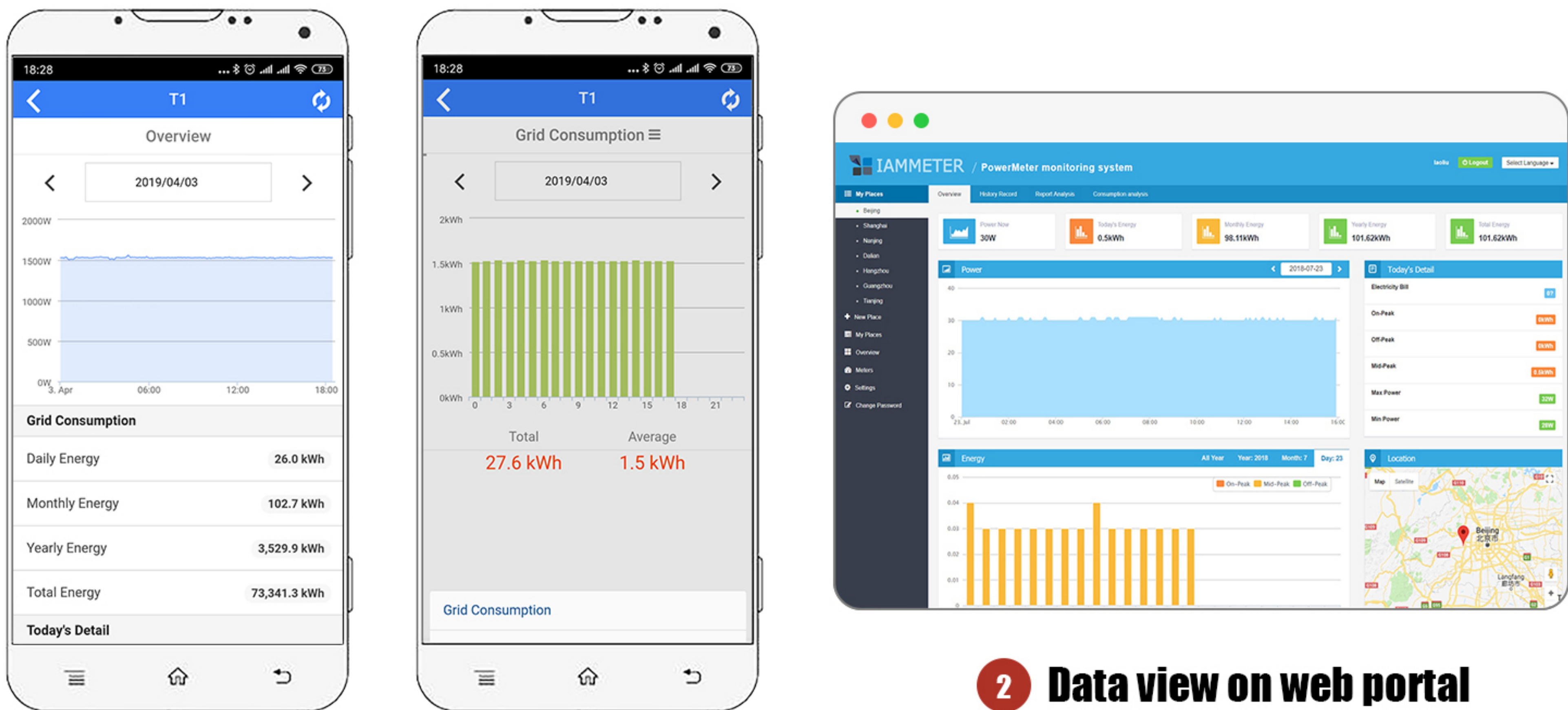
6.Edit the Meter



Tips

It is single phase in the system by default. You need to change the meter “Type” as “Three phase”.

7.View the Data



1 Data view on app

2 Data view on web portal

Tips

Please visit <https://www.iammeter.com> to log into the web portal. Same username and password as app.